

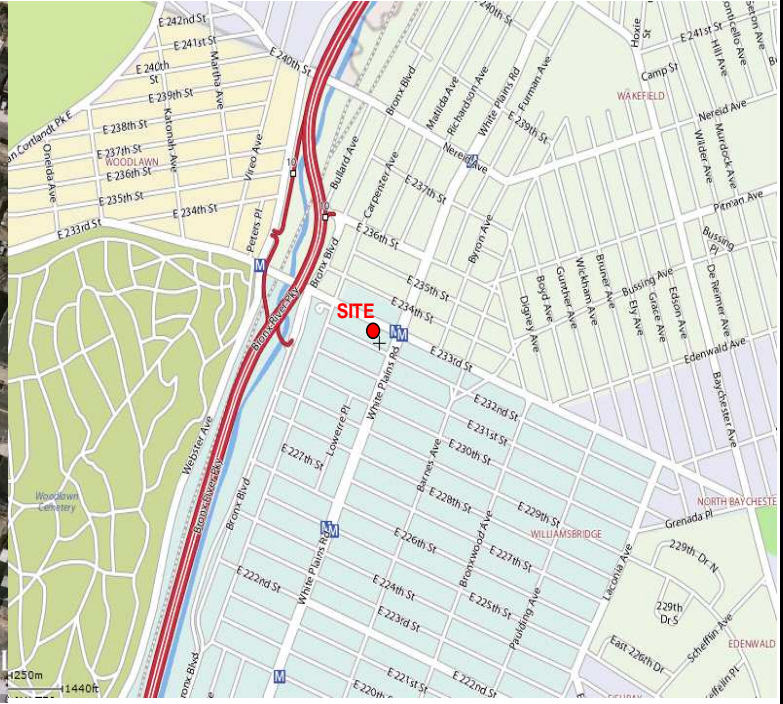
EXCLUSIVE AVAILABLE FOR SALE

682 East 233rd Street, Bronx, New York 10466

AERIAL VIEW



AREA MAP



CONTACT:

MIKE RAIFAISEN
 516.498.1010 ext. 221
mr@comretail.com
RALPH WILKINS
 516.498.1010 ext. 209
rw@comretail.com

525 Northern Boulevard, Suite 310
 Great Neck, NY 11021
 Tel: 516.498.1010
 Fax: 516.498.1088
www.comretail.com

BUILDING SPECIFICATIONS

- LOT APPROX. 4,250 SQ. FT.
- APPROVED PLANS FOR 8,500 SQ. FT.
- ASKING PRICE \$699,000
- ZONED R-6
- WILL DELIVER WITH APPROVED PLANS FOR 2 STORY MEDICAL BUILDING

DEMOGRAPHICS

| <u>Radius</u> | <u>1/4 Mile</u> | <u>1/2 Mile</u> | <u>1 Mile</u> |
|-----------------|-----------------|-----------------|---------------|
| Population | 9,614 | 29,163 | 94,561 |
| # of Households | 3,457 | 10,629 | 34,230 |
| Avg. HH Income | \$47,511 | \$53,802 | \$55,865 |

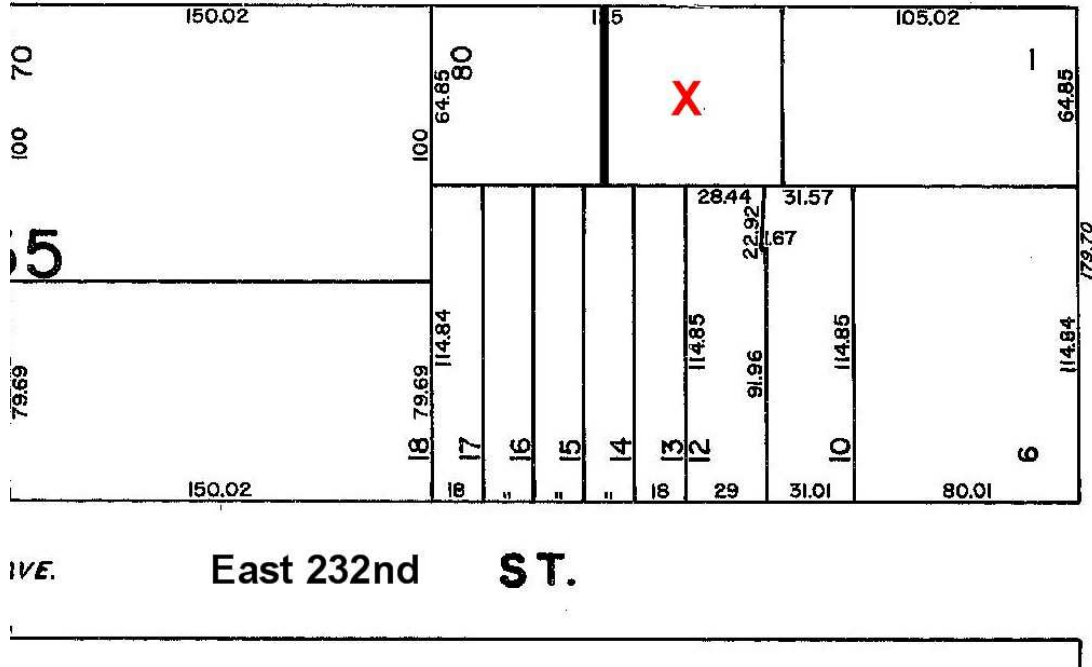


October 29, 2009

Subject to errors, omissions, changes or withdrawal without any prior notice

TAX MAP

East 233rd ST.



WHITE PLAINS ROAD

IVE. East 232nd ST.

AGENT:

MIKE RAIFAISEN
 516.498.1010 ext. 221
mr@comretail.com
RALPH WILKINS
 516.498.1010 ext. 209
rw@comretail.com



October 29, 2009

Subject to errors, omissions, changes or withdrawal without any prior notice