

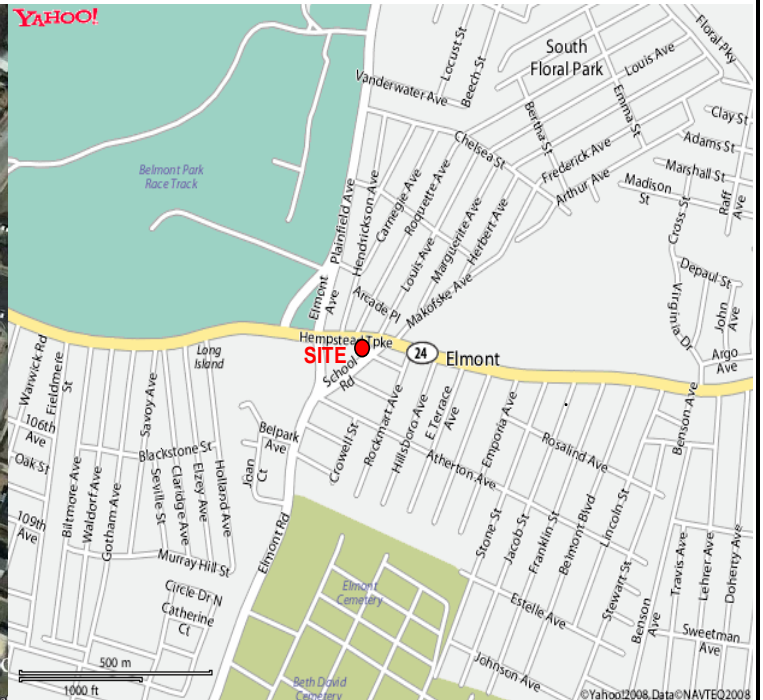
AVAILABLE

SE corner of Hempstead Tpke & Elmont Road Elmont, New York 11003

AERIAL VIEW



AREA MAP



CONTACT:

EDNA KOWALCZYK
516.498.1010 ext. 203
ek@comretail.com

MELISSA NAEDER
516.498.1010 ext. 235
mn@comretail.com

525 Northern Boulevard, Suite 310
Great Neck, NY 11021
Tel: 516.498.1010
Fax: 516.498.1088
www.comretail.com

BUILDING SPECIFICATIONS

- APPROX. 17,000 SQ. FT.
- RENT UPON REQUEST
- CURRENTLY A SERVICE STATION

DEMOGRAPHICS

<u>Radius</u>	<u>1 Mile</u>	<u>3 Miles</u>	<u>5 Miles</u>
Population	34,311	365,913	903,131
# of Households	10,480	117,197	301,435
Avg. HH Income	\$81,752	\$82,112	\$81,676

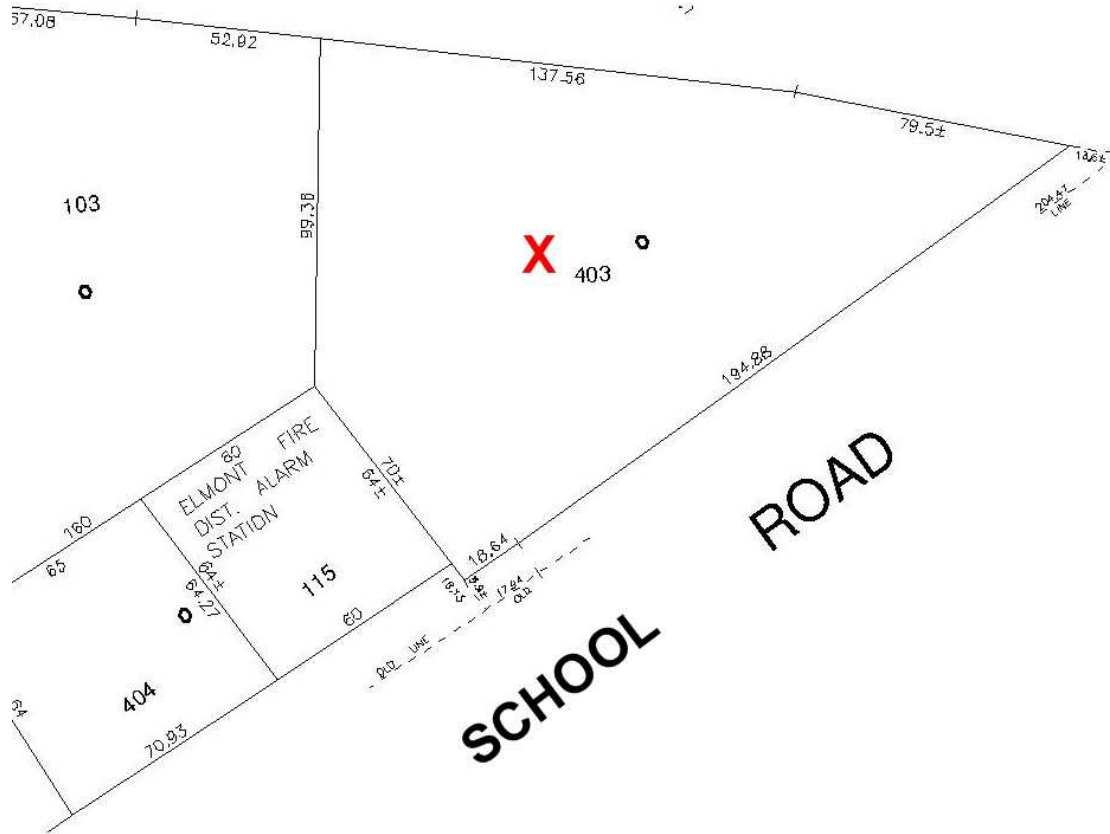


February 16, 2009

Subject to errors, omissions, changes or withdrawal without any prior notice

TAX MAP

HEMPSTEAD TPKE



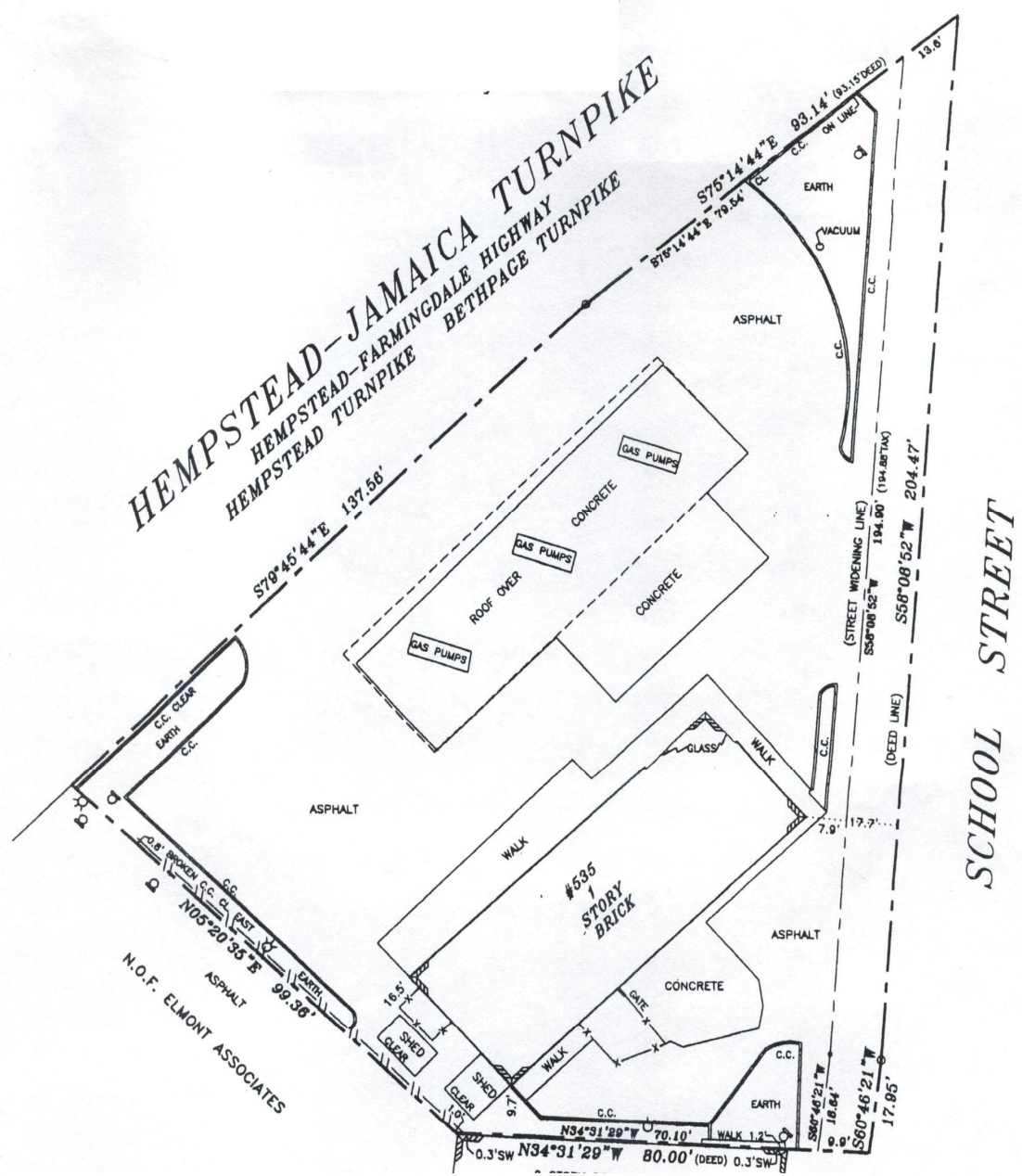
AGENT:

EDNA KOWALCZYK
516.498.1010 ext. 203
ek@comretail.com

MELISSA NAEDER
516.498.1010 ext. 235
mn@comretail.com



SURVEY



AGENT:

EDNA KOWALCZYK
 516.498.1010 ext. 203
ek@comretail.com

MELISSA NAEDER
 516.498.1010 ext. 235
mn@comretail.com

