

**AVAILABLE**  
**40 Carmans Road**  
**Massapequa, New York 11758**

**BLDG SIZE:** APPROX. 9,000 SQ. FT. BUT APPROVED TO BUILD AN  
ADDITIONAL 3,000 SQ. FT.

**ASKING PRICE:** \$25 PSF + \$11 EXTRAS

**USE:** FORMER WIZ

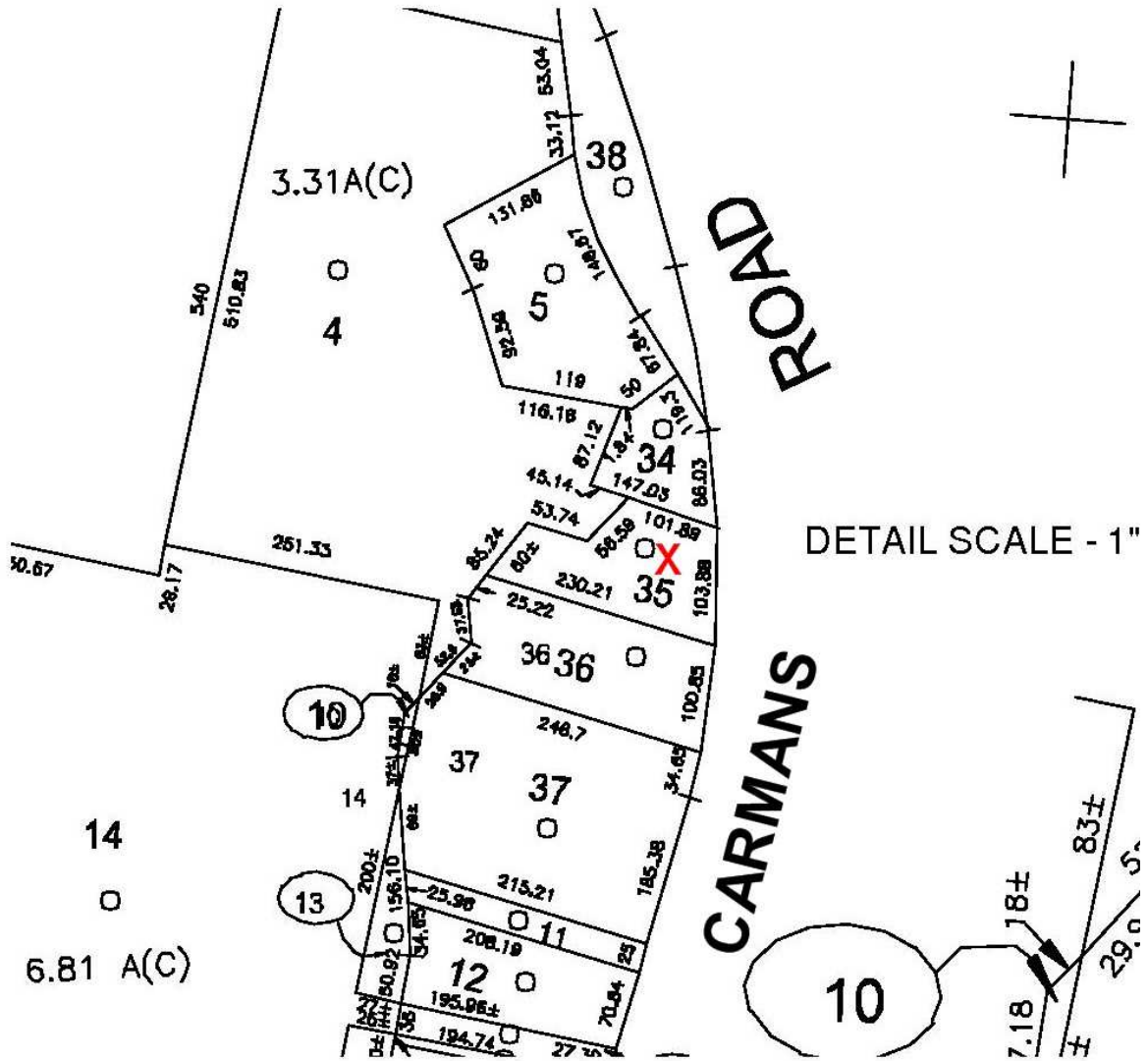
**COMMENTS:** **OUT PARCEL TO SUNRISE MALL**  
OVER 800 NEW HOMES WITHIN 2 BLOCKS OF THE SITE  
ABUNDANT PARKING

**AERIAL VIEW**

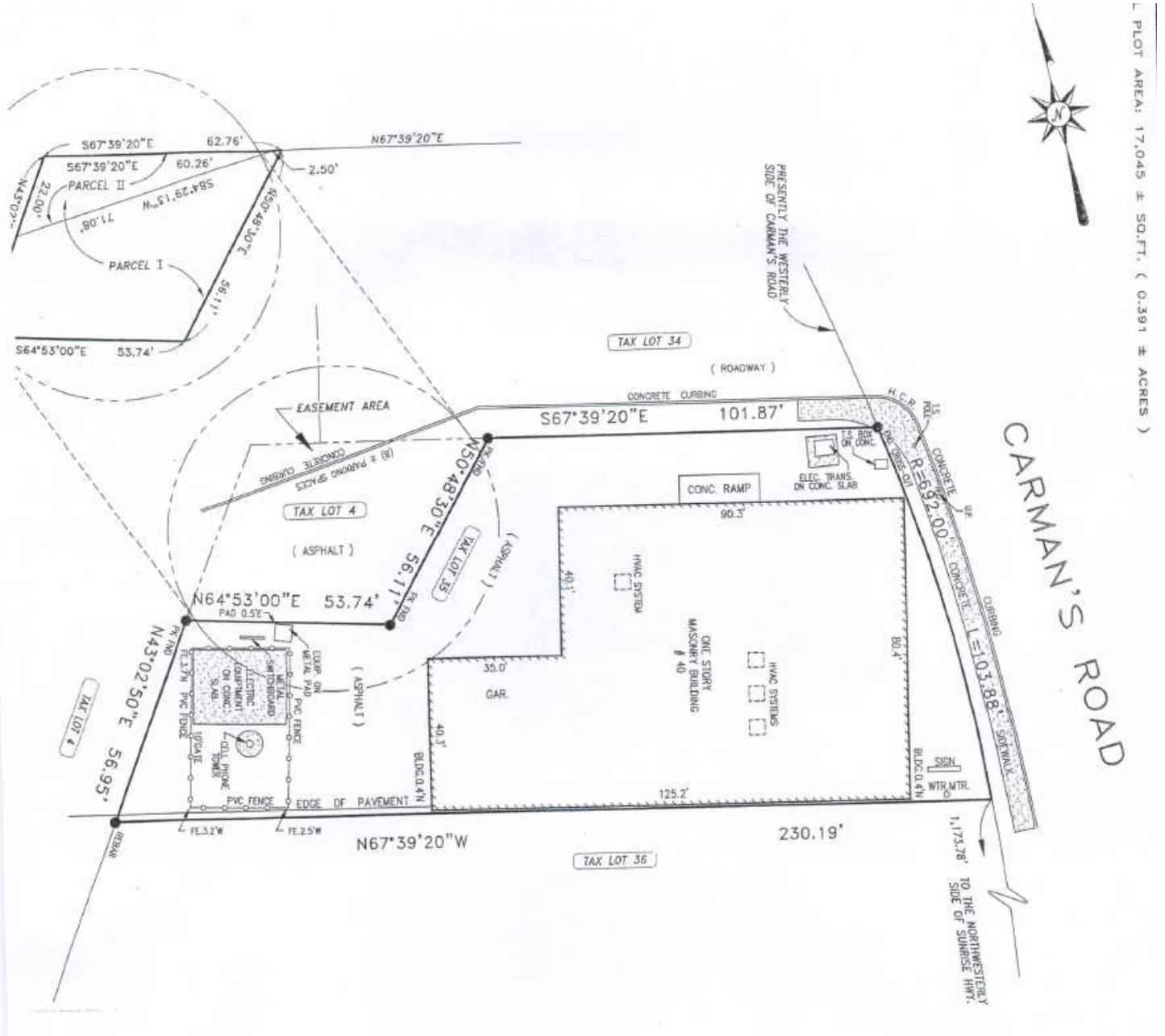


Subject to errors, omissions, changes or withdrawal without any prior notice

**TAX MAP**



**SITE PLAN**



**PHOTOS**



**AREA MAP**

